



## Legendary Food Trails

### What is a Lough Derg Legendary Food Trail?

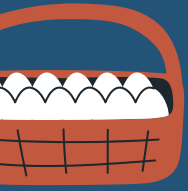
Lough Derg Legendary Food Trails have pulled together bespoke packages linking accommodation, activities and food offerings to promote a sustainable agri-food tourism product across Lough Derg.

We've produced a number of Lough Derg Legendary Food Trails which incorporate accommodation and activity with a choice of additional farm experiences selected by the visitor.

### Businesses on the Food Trail

Podumna Village	(090) 975 9404	Seed Savers	(061) 921 866
Dick's Bike Hire	(083) 434 3480	Lough Derg E-Bike Tours	(087) 459 3141
Killaloe Hotel & Spa	(061) 622 123	Brookfield Farm	(086) 855 1309
Portumna Castle and Gardens	(090) 974 1658	Kylemore Cheese	(083) 845 5272
Irish Workhouse	(090) 975 9200	Sunny Meadow Farms	(087) 952 7466
Inis Cealtra	(086) 874 9710	Wilde Irish Chocolates	(061) 922 080
Nenagh Castle	(067) 33 850	Killaloe Farmer's Market	
River Run Cottages	(086) 411 4225		

Some quick steps to ensure you make the most of potential visitors:



1 Note the requested dates, and let your caller know you'll check availability and get back to them;



2 Ensure there's available accommodation;



3 Tailor a package with a food or farm element to suit the requirements of your visitor;



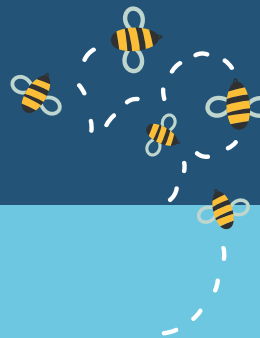
4 If the food or farm element isn't available suggest an alternative from the list below;



5 Once everything is booked, confirm with the guest and provide cost details;



6 And finally, get ready to welcome new business!



## Helpful tips to note

Availability for these offers varies so here are some quick tips to help your guests plan ahead:

- |  |   |                 |
|--|---|-----------------|
| ✓ <b>Killaloe Hotel &amp; Spa</b><br><i>Incl. Massage - subject to availability</i>  | ✓ <b>Tours of Seed Savers</b><br><i>- February to November, Tuesdays to Fridays</i> | <b>From €5</b>  |
| ✓ <b>Podumna Village and Dick's Bike Hire</b><br><i>- February to October</i>  | ✓ <b>Killaloe Farmer's Market</b><br><i>- Sundays, 11am to 3pm</i>                  | <b>Free</b>     |
| ✓ <b>Riverrun Cottage</b><br><i>- two night minimum stay</i>   | ✓ <b>Sunny Meadow Farm</b><br><i>- Fridays 9am to 4pm</i>                           | <b>Free</b>     |
| ✓ <b>Guided Tour of Portumna Castle and Gardens</b><br>and <b>Guided Tour of Irish Workhouse</b><br><i>- March to November</i> | ✓ <b>Wilde Irish Chocolates</b><br><i>- Monday to Saturday 9am - 5pm</i>            | <b>From €9</b>  |
| ✓ <b>Inis Cealtra</b> - April to September   | ✓ <b>Brookfield Farm &amp; Kylemore Cheese</b><br><i>- subject to availability</i>  | <b>€P.O.A.</b>  |
| ✓ <b>Nenagh Castle Guided Tour</b><br><i>- Tuesday to Saturday</i>   | ✓ <b>Lough Derg eBike tours</b><br><i>- Max group 4</i>                             | <b>From €30</b> |

Find out more about Lough Derg Legendary Food Trails at [discoverloughderg.ie](http://discoverloughderg.ie)

